



Pulmuone

Wholesome Foods for You & the Planet

Foods

Sung Yoon Nam
VP of Pulmuone NA Sales

A close-up photograph of several pieces of golden-brown, fried food, likely Korean fried chicken, arranged on a dark surface. The text "Got Plants?" is overlaid in white.

Got Plants?

- A LOHAS (Lifestyle of Health & Sustainability) company that seeks to promote beautiful harmony between people and the earth
- Mr. Won Kyung-Sun, father of organic farming in Korea and originator of Pulmuone Foods, dedicated his life to developing organic farming practice and helping those less fortunate



Pulmuone:
Who We Are




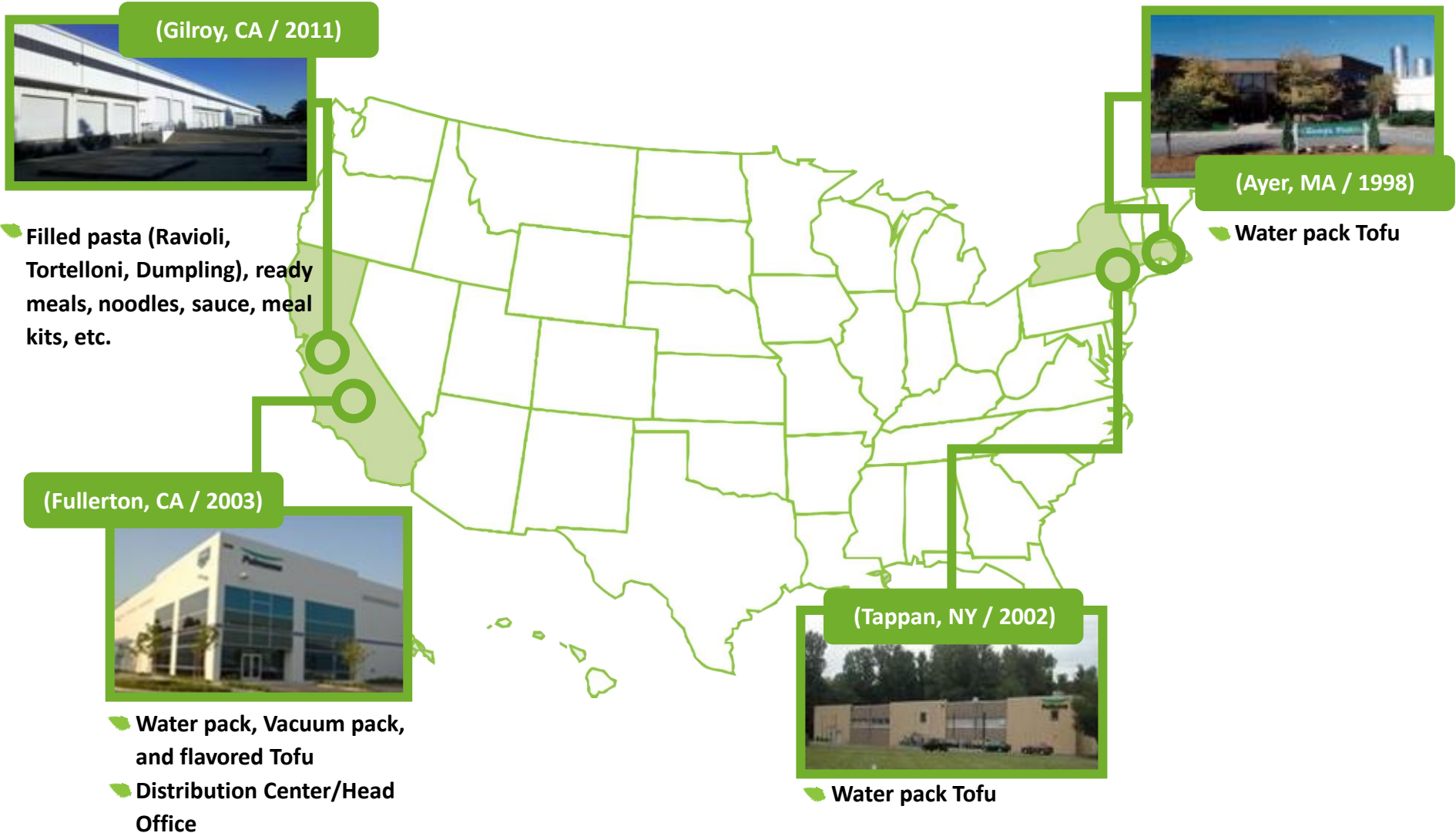
Wholesome food campaign since 2010

Dedicated food educators to educate preschool & elementary children about healthy eating & food choices (+2000 times/year)

Wholesome Foods for You & the Planet!
Nourishing the body while nurturing the Earth ...

USA Operations

 Pulmuone Foods USA HQ is based in Fullerton, CA and has four manufacturing facilities in the U.S.



Plant-Based Category Product Tree

PLANT-BASED PROTEIN

Water Pack (WP)



Type:

- Extra Firm
- Firm
- Silken (or Soft)
- Twin Pack – Extra Firm
- Twin Pack – Firm



High Protein (HP) Vacuum Pack (VP)



Type:

- High-Protein Vacuum Packed Tofu



Baked Value Added (VA)



Type:

- WW baked tofu - teriyaki, savory, & sriracha
- NSY tofuBaked - teriyaki & sesame ginger, Sweet BBQ
- Crispy Tofu Bites



Ready Meal (RM)



Type:

- Toss'ables Garlic & Herb
- Toss'ables Plain
- Superfood Skillet - Mexican Style, Breakfast Scramble
- Organic Meal Solutions – Classic Bolognese



Plant-based Meat



Type:

- Plant-based Steak
- Plant-based Patties



Asian Foods Category Product Tree

ASIAN FOODS & SAUCES

Meal kits



Type:

- Asian Meal Kit
- PBP Meal Kit
- Italian Meal Kit
- RTU Sauce



Dumplings & Wraps



Type:

- Vegan Dumplings
- Meat Dumplings
- Frozen Dumplings
- Asian Wraps



Kimchi



Type:

- Vegan Kimchi
- Regular Kimchi



Others



Type:

- Shirataki Noodle
- Salsa & Pesto
- Ravioli (Dis.)
- Frozen Snack
- Soups



Asian/Ethnic Products



Type:

- Refrigerated
- Frozen
- Shelf-Stable



Food Service Product Tree

Tofu/Plant Based Protein



Plant-based Steak

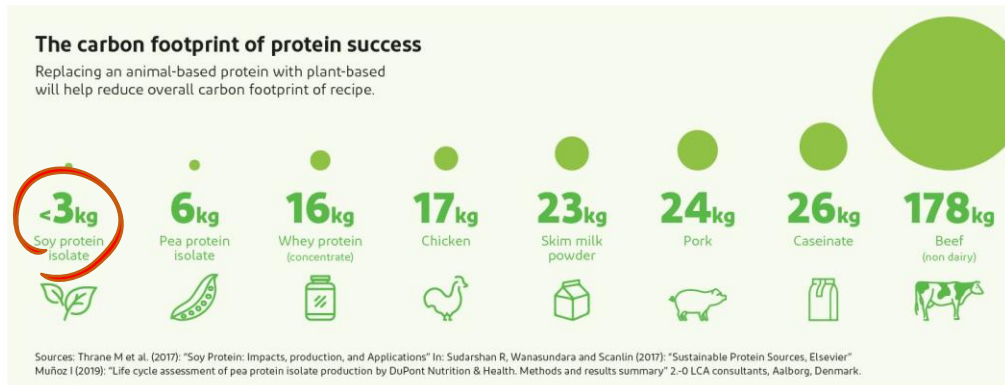


2.2lb x 10

Korean Black Bean Sauce (JjaJang)

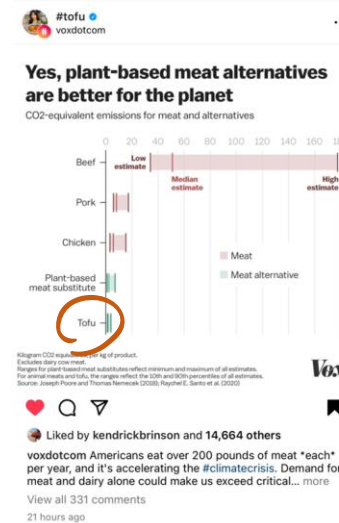


3lb x 6



An LCA of isolated soy protein shows that a 50% replacement of beef protein (with soy protein) in all beef burgers in US could reduce total greenhouse gas emissions by 79 million tons CO2e annually. This translates into removing 17 million average US cars from the streets.

Our Role in Sustainability: Plant-Based Protein





“Every tofu-loving vegetarian,
and omnivore for that matter,
needs to know about Nasoya.”

— TASTING TABLE



What We
Offer to Our
Consumers
and
Customers

[Plantspired Steak Sizzle
Video](#)

Pulmuone is becoming known for its better and cleaner business practices

- Awarded 2021 **ESG Grand Prize**
- Selected as **Korea's Most Admired Company** for 16 consecutive years, the only food company in Korea
- Selected as a **2021 CDP Water Management Excellent Company** in recognition of our eco-friendly management practices



What We Offer to
Our Consumers &
Customers:
**Better & Cleaner
Business Practices**



Appendix

- Pulmuone Foods USA began in 1991 with the same principles – **Nutrition & Sustainability** for the **well-being of your family** and the **environment**
- For decades, we've been **making plant-forward cooking easier and more delicious**, inspiring healthy eating for people in all walks and stages of life



The graphic features three circular icons at the top: a blue circle with a leaf icon labeled 'HEALTHY LIFESTYLE', a green circle with a recycling symbol labeled 'SUSTAINABILITY', and a red circle with a handshake icon labeled 'COMMUNITY'. Below these are images of various product packages including Nasoya Organic Tofu, Organic Tofu Super Firm, Organic-Vegan Tofu Vegetable Dumplings, Authentic Korean Kimchi, Nasoya Tofu Egg Roll Wraps, and a row of Plantspired Organic Meal Solutions. To the right, a dark grey box contains the text 'Pulmuone Family of Brands'. Below this, four brand logos are listed with their respective descriptions: Nasoya (America's #1 Brand of Tofu), Pulmuone (A leader in Authentic Asian Foods), Emerald Valley Organic (Premium Salsa at the Right Price), Monterey Gourmet Foods (Authentic Italian Pastas & Sauces), and Pulmuone Food Service (Making Food Service Plant-Forward Cooking Easier & Delicious).

Pulmuone Family of Brands

-  **America's #1 Brand of Tofu**
-  **A leader in Authentic Asian Foods**
-  **Premium Salsa at the Right Price**
-  **Authentic Italian Pastas & Sauces**
-  **Making Food Service Plant-Forward Cooking Easier & Delicious**

Pulmuone ([Pull-Moo-One](#))